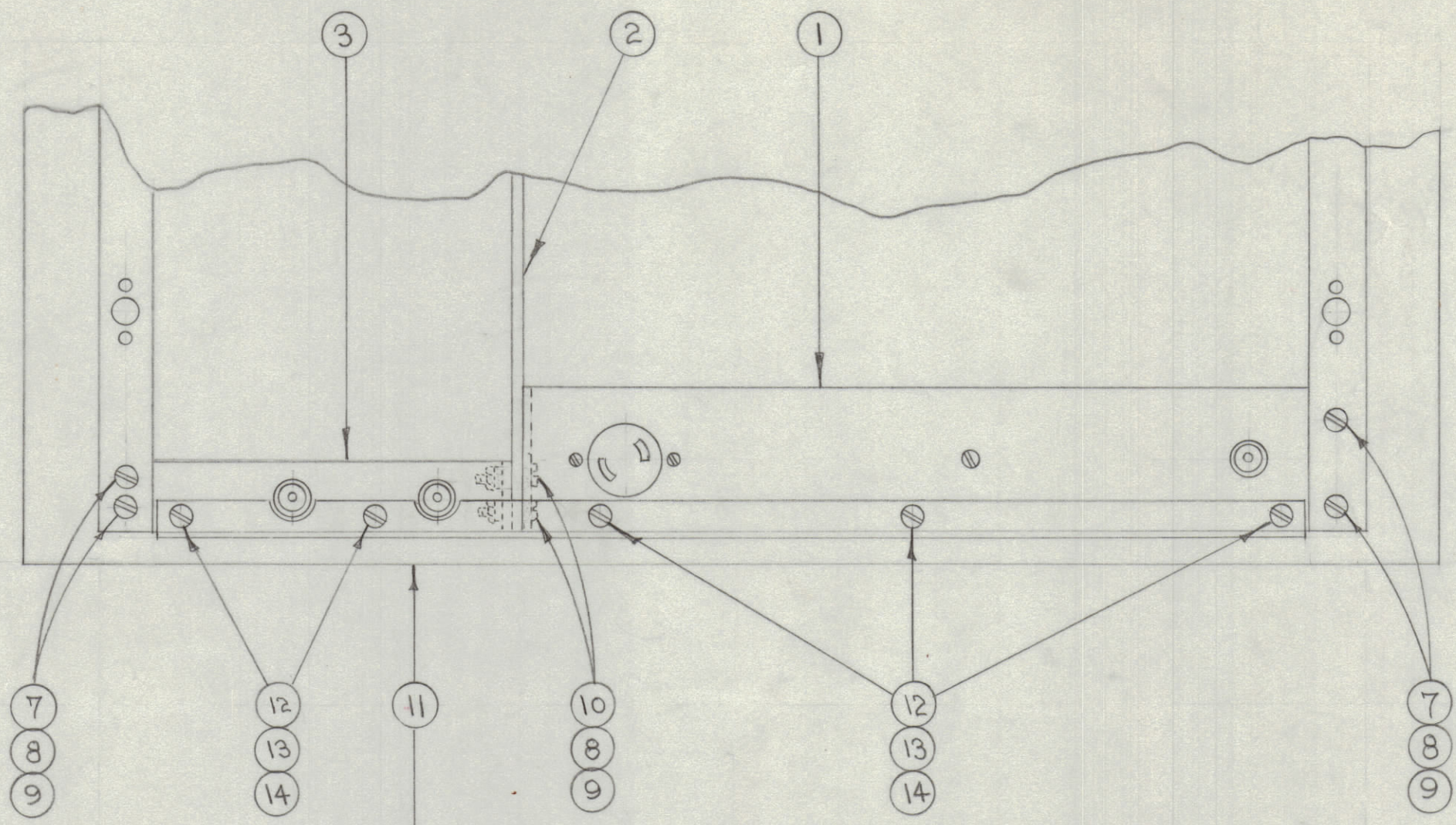
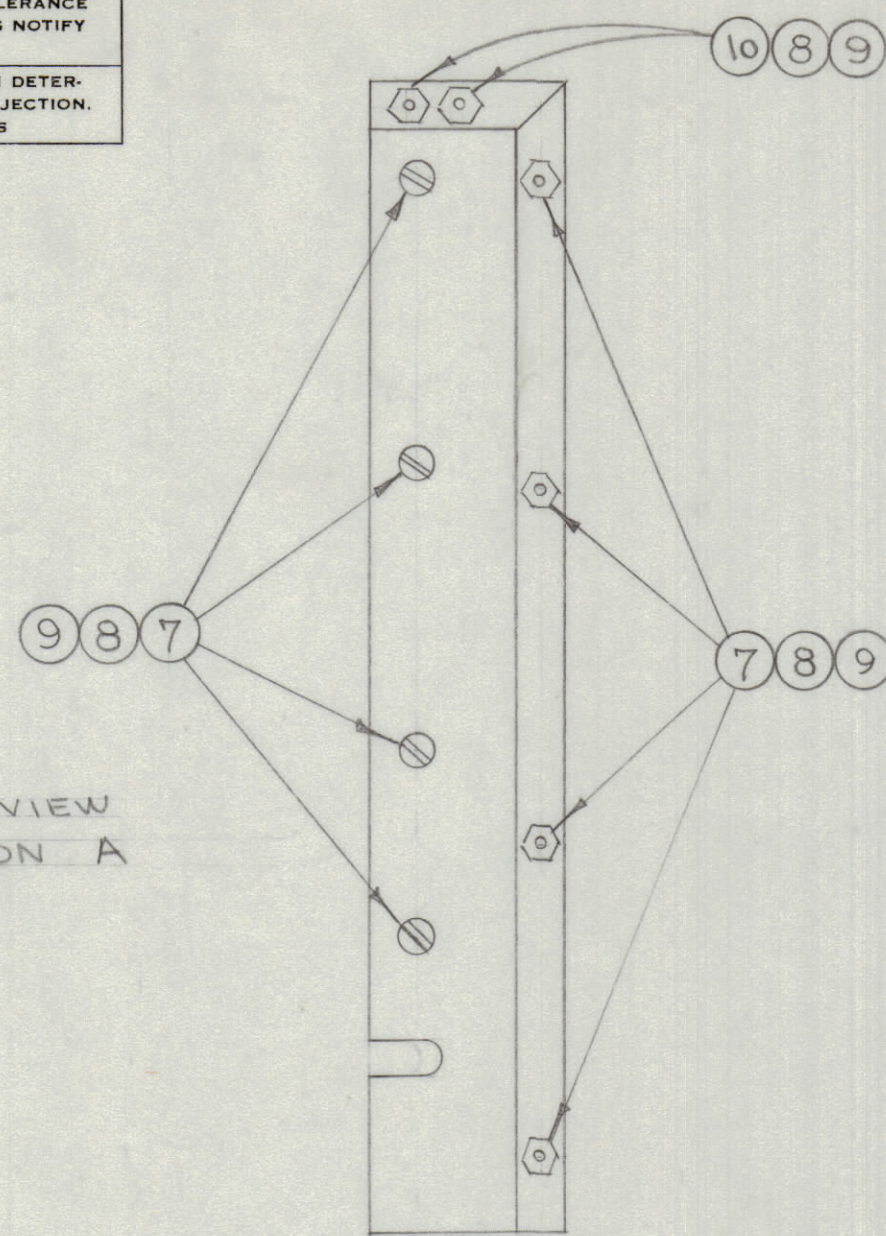


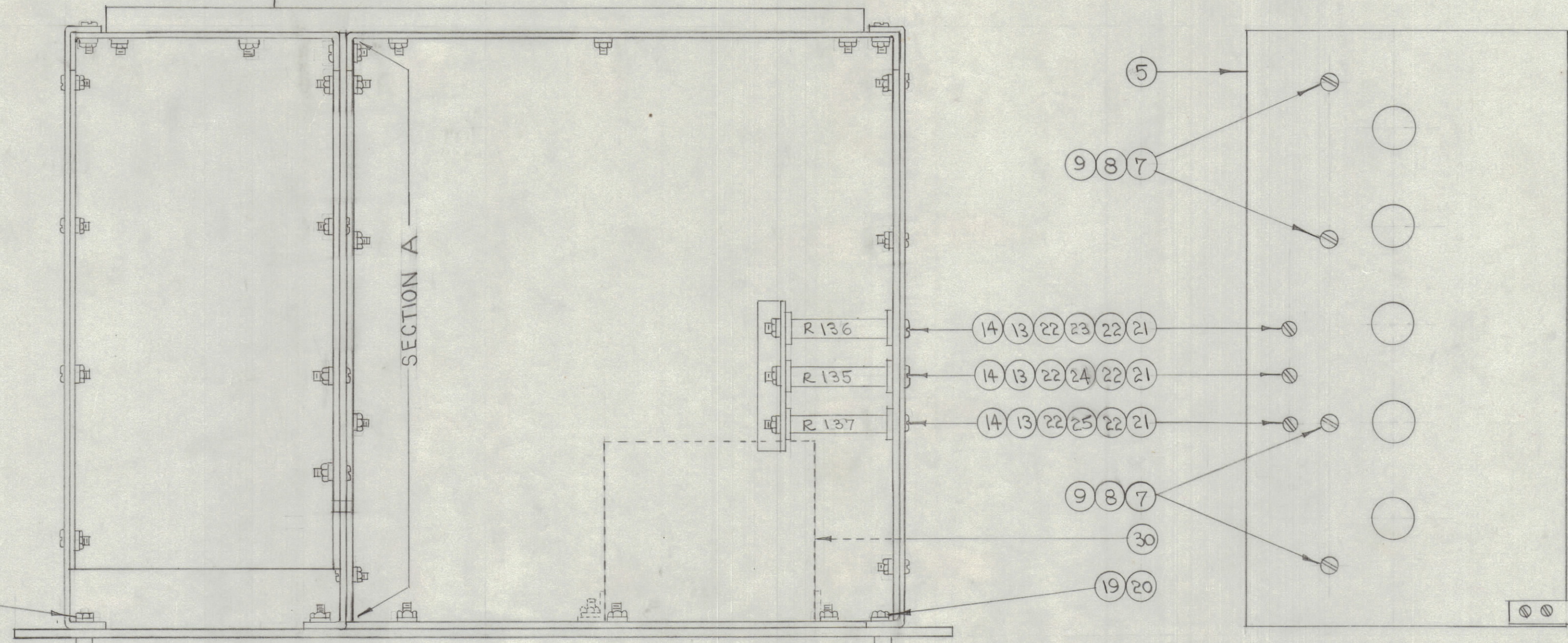
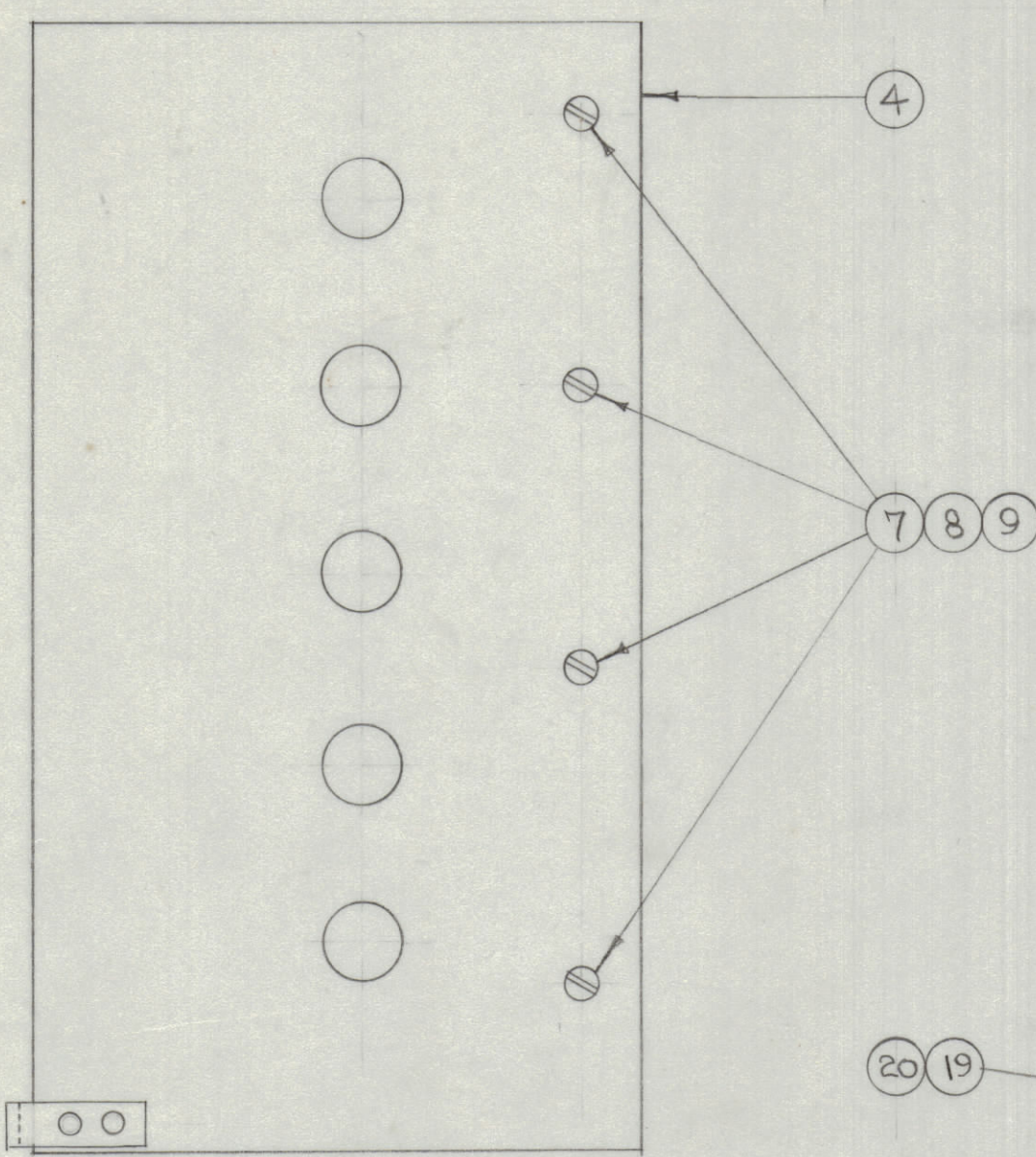
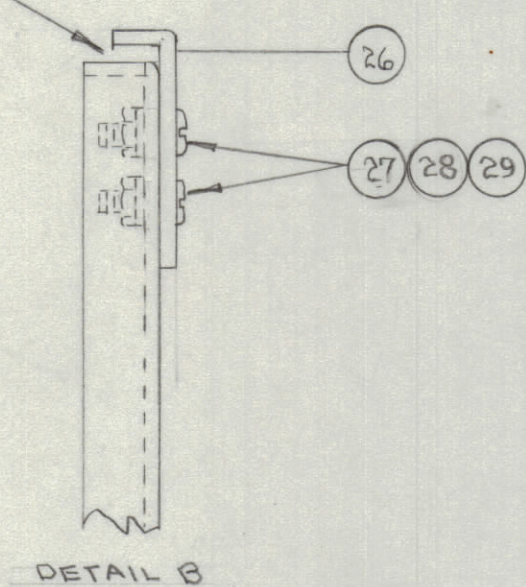
IF IT IS FOUND DESIRABLE TO CHANGE ANY TOLERANCE OR OTHER DETAIL SPECIFIED ON THIS DRAWING NOTIFY THE PURCHASER PROMPTLY.
 MAXIMUM ALLOWABLE TOLERANCES HAVE BEEN DETERMINED AND DEVIATIONS WILL BE CAUSE FOR REJECTION. REMOVE ALL BURRS AND SHARP EDGES

RELEASED

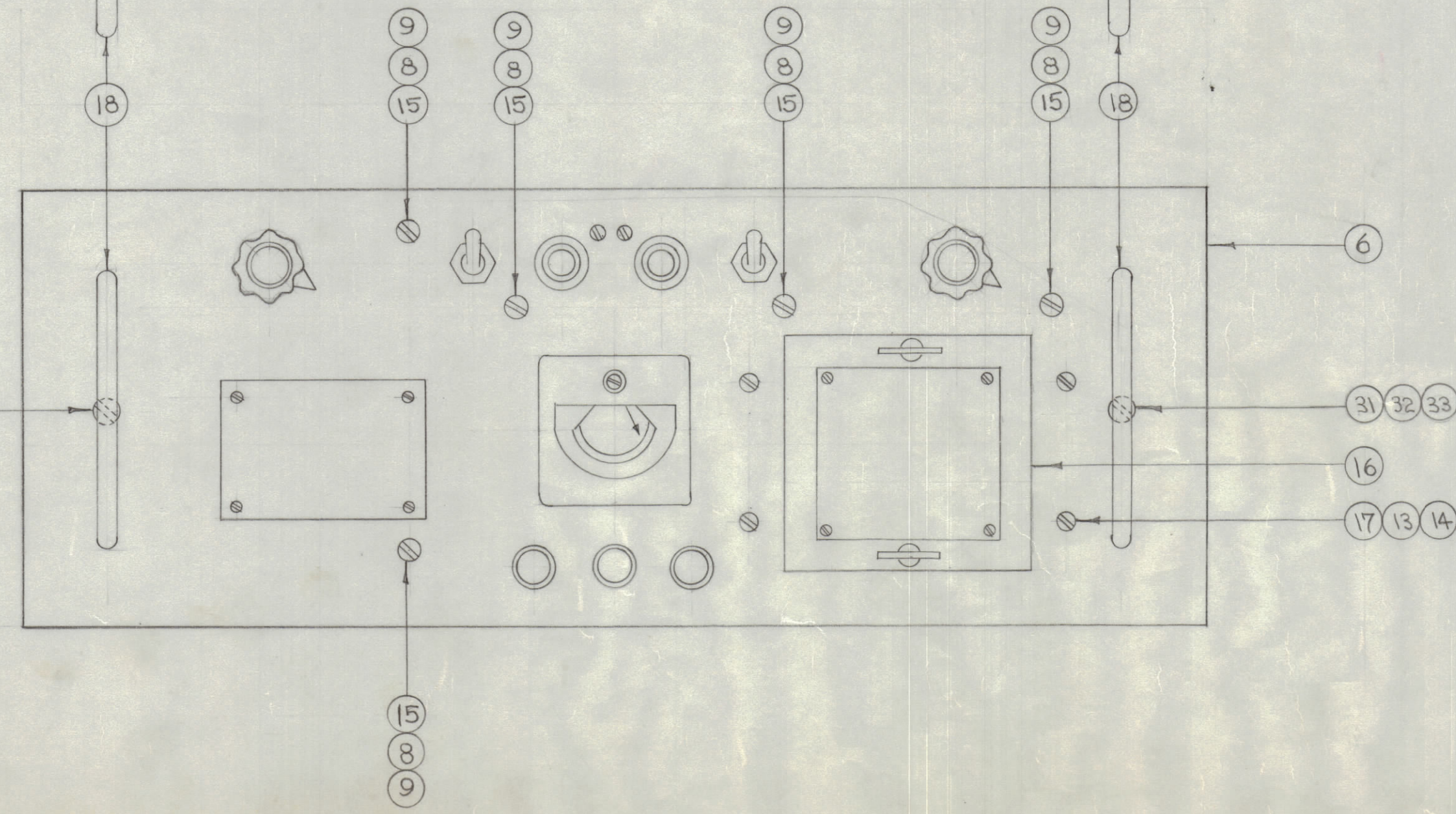
SIDE VIEW SECTION A



.064 CLEARANCE BETWEEN BRACKET AND LIP



ALL BOTTOM LIPS OMITTED TO SHOW HARDWARE DETAIL



ALL SCREW HEADS ON FRONT PANEL ARE TO BE PAINTED WITH SMOOTH GREY ENAMEL (S-115).

COMPONENTS AND WIRING OMITTED. (SEE SUB ASSEMBLYS, ITEMS 1-3-4-5 AND 6 FOR DETAILS)

NOTICE TO PERSONS RECEIVING THIS DRAWING

THE TECHNICAL MATERIEL CORPORATION claims proprietary right in the material disclosed herein. This drawing is issued in confidence for engineering information only and may not be reproduced or used to manufacture anything shown hereon without permission from THE TECHNICAL MATERIEL CORPORATION to the user. This drawing is loaned for mutual assistance and is subject to recall at any time.

Property of:
 THE TECHNICAL MATERIEL CORPORATION
 MAMARONECK, NEW YORK

2	33	NTH 1032 BCB	NUT, HEX.
2	32	LWS 10 MRC	LOCKWASHER, SPLIT

2	31	SCFS 1032 BCB	SCREW, MACHINE	
1	30	A-147	XTAL OVEN ASSEMBLY	
4	29	NTH0440BC8	NUT, HEX	
4	28	LWS 04 MRC	LOCKWASHER, SPLIT	
4	27	SCBS0440BC4	SCREW, MACHINE	
2	26	MS-162	BRACKET, COVER	
1	25	A-238	RESISTOR, FIXED, SUB ASSY.	R-137
1	24	RW-109-28	RESISTOR, FIXED	R-135
1	23	RW-104	RESISTOR, FIXED	R-136
6	22	WA-101-3	WASHER, FIBER	
3	21	SCBS0632BC26	SCREW, MACHINE	
4	20	AN3C-5A	BOLT, MACHINE	
4	19	LWS 10 MRC	LOCKWASHER, SPLIT	
2	18	HA-101	HANDLE, FRONT	
4	17	SCFS0632BC8	SCREW, MACHINE	
1	16	A-138	DOOR, XTALOVEN, SUB ASSY.	
5	15	SCFS0832BC8	SCREW, MACHINE	
12	14	NTH0632BC8	NUT, HEX.	
12	13	LWS 06 MRC	LOCKWASHER, SPLIT	
5	12	SCBS0632BC6	SCREW, MACHINE	
1	11	MS-175	REAR ANGLE BRACKET	
2	10	SCBS0832BC7	SCREW, MACHINE	
2	9	NTH0832BC10	NUT, HEX	
2	8	LWS 08 MRC	LOCKWASHER, SPLIT	
2	7	SCBS0832BC6	SCREW, MACHINE	
1	6	A-182	PANEL, FRONT - SUB ASSY.	
1	5	A-181	SIDE, LEFT - SUB ASSY.	
1	4	A-180	SIDE, RIGHT - SUB ASSY.	
1	3	A-202	CHASSIS, POWER - SUB ASSY.	
1	2	MS-131	CENTER BRACKET	
1	1	A-184	CHASSIS, MAIN, COMP. SUB ASSY.	

REG. ITEM	PART NO.	DESCRIPTION	SYMBOL
THE TECHNICAL MATERIEL CORP. MAMARONECK, NEW YORK			
MAIN ASSEMBLY			
SHEET 1 OF 3			
C.O.D. 10-29-52		As J. J.	
DRAWN		ELEC. DES. APP.	MECH. DES. APP.
HEAT TREAT. SPEC.		CHECKED	FINAL APPROVAL
FINISH & SPEC. NO.		A-183 A	

ISSUE ITEM	CHANGED FROM	DATE	CN. NO.	DRAFTS	CHECKER	ENG. APP.
A 1	ITEM 23 WAS RW-108-42	11-1952	1	C.D.D.		
TOLERANCES						
ALL OTHERS	DEC. DIM. ±	DRILL, PUNCH, COMMERCIAL STOCK				
	FRAC. DIM. ±	SIZES AND MANUFACTURERS				
	ANGULAR DIM. ±	TOLERANCES ARE NOT INCLUDED.				

LFA	109	10-29-52
MODEL	PROJECT NO.	DATE
USED ON		

A-183 A