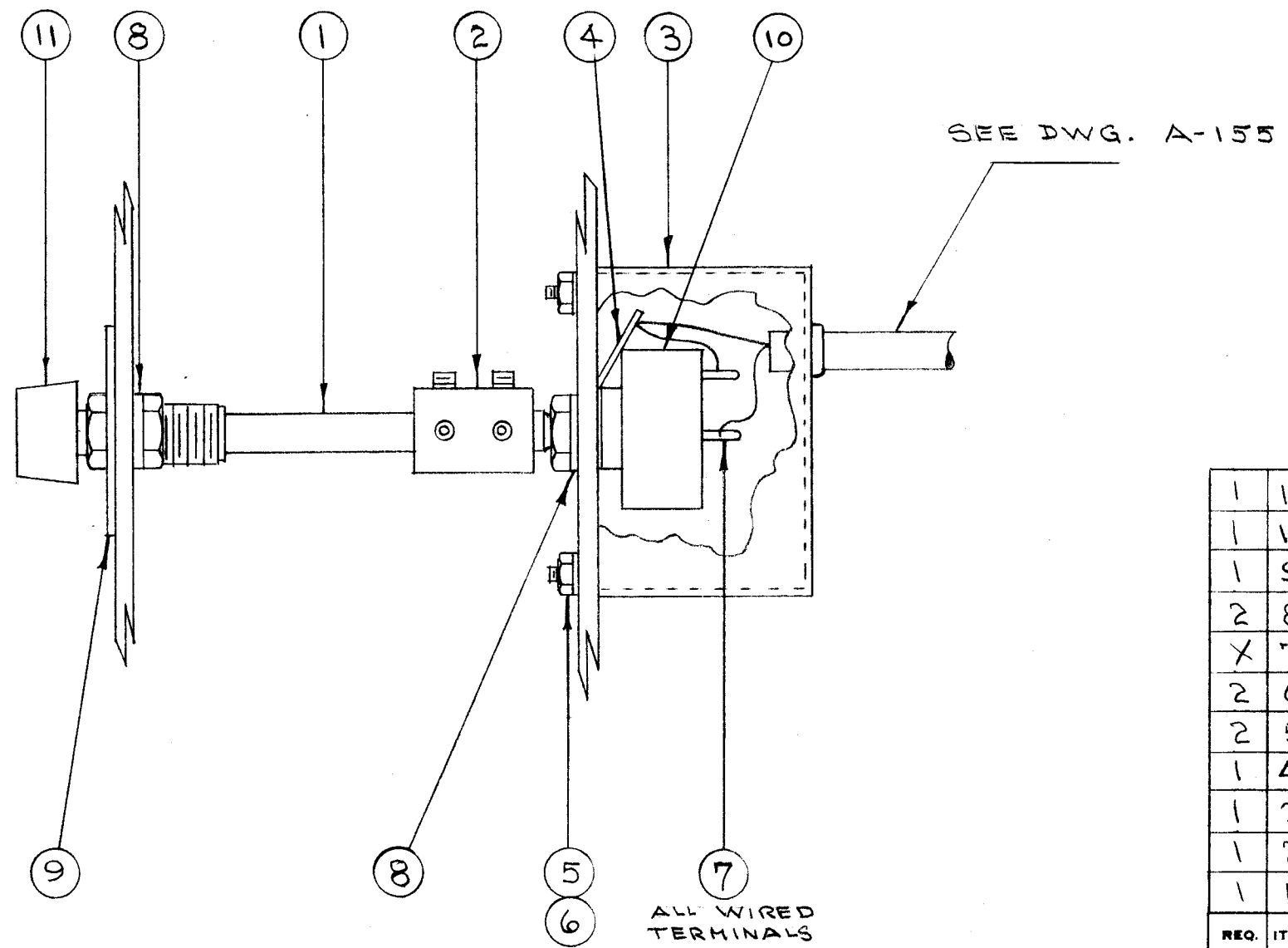


IF IT IS FOUND DESIRABLE TO CHANGE ANY TOLERANCE OR OTHER DETAIL SPECIFIED ON THIS DRAWING NOTIFY THE PURCHASER PROMPTLY.

MAXIMUM ALLOWABLE TOLERANCES HAVE BEEN DETERMINED AND DEVIATIONS WILL BE CAUSE FOR REJECTION. REMOVE ALL BURRS AND SHARP EDGES

A-153



1	11	MP-102-1	KNOB, INST. TYPE	
1	10	SW-129-2	SWITCH, ROTARY	S201
1	9	NP-109	NAME PLATE	
2	8	LWI37MRC	LOCKWASHER, INT.	
X	7	BS-100	SOLDER, SOFT	
2	6	NTH0440BC6	NUT, HEX	
2	5	LWS04MRC	LOCKWASHER, SPLIT	
1	4	TE-111-2	LUG, SOLDER	
1	3	A-128	SHIELD, SUB ASSY.	
1	2	MC-102	COUPLING, SWITCH SHAFT	
1	1	PM-120	PANEL BEARING & SHAFT	

REQ.	ITEM	PART NO.	DESCRIPTION	SYMBOL
#			THE TECHNICAL MATERIEL CORP. MAMARONECK. NEW YORK	
STOCK SIZE				
#			MASTER-SLAVE SWITCH	
MATERIAL			ASSEMBLY (S-201)	
WEIGHT PER PC.			C.D.D. 9-20-52	
TYPE & TEMPER			DRAWN	
#			ELEC. DES. APP.	
HEAT TREAT. SPEC.			MECH. DES. APP.	
#			CHECKED	
FINISH & SPEC. NO.			FINAL APPROVAL	

ISSUE	ITEM	CHANGED FROM	DATE	CN. NO.	DRAFTS	CHECKER	ENG. APP.
TOLERANCES		SCALE: #					
ALL OTHERS		DRILL, PUNCH, COMMERCIAL STOCK SIZES AND MANUFACTURERS TOLERANCES ARE NOT INCLUDED.					

DMK-A	140	A-256	9-20-52
MODEL	PROJECT NO.	ASS'Y. NO.	DATE
USED ON			