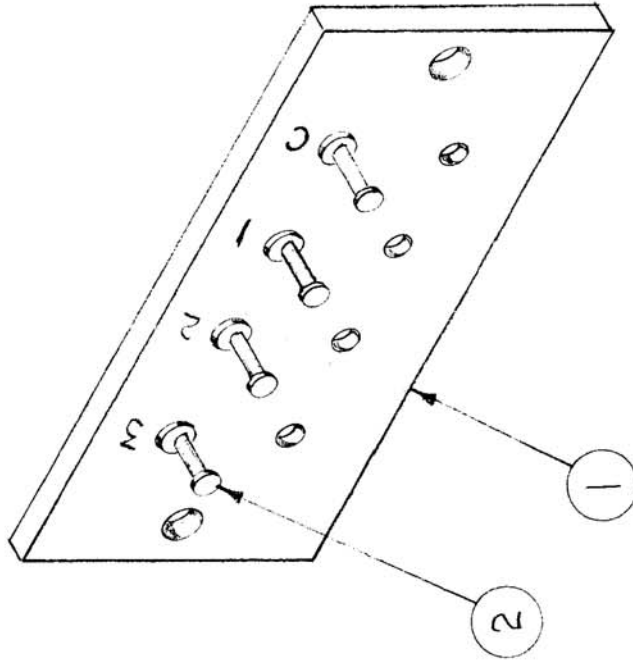


IF IT IS FOUND DESIRABLE TO CHANGE ANY TOLERANCE OR OTHER DETAIL SPECIFIED ON THIS DRAWING NOTIFY THE PURCHASER PROMPTLY.

MAXIMUM ALLOWABLE TOLERANCES HAVE BEEN DETERMINED AND DEVIATIONS WILL BE CAUSE FOR REJECTION. REMOVE ALL BURRS AND SHARP EDGES



RELEASED

A-144 A

| USED ON      |             |
|--------------|-------------|
| AMT PER UNIT | PROJECT NO. |
| 1            | A-600       |
| 1            | A-144       |
|              | 109         |
|              | 9-16-51     |

| MODEL | ASSY. NO. | DATE    |
|-------|-----------|---------|
| XFK   | A-600     | 11-2-53 |
| LFA   | A-144     | 9-16-51 |

REF: LD132

| A         | 2        | TE-105-A   | TERMINAL LUG.   |                 |          |
|-----------|----------|--|-----------------|-----------------|----------|
| 1         | 1        | PX 101   | BOARD, TERMINAL |                 |          |
| REQ. ITEM | PART NO. | DESCRIPTION  | SYMBOL          |                 |          |
|           | #        | THE TECHNICAL MATERIEL CORP.<br>MAMARONECK. NEW YORK |                 |                 |          |
|           | #        | BOARD, TERM. XTALOVEN                                |                 |                 |          |
|           | #        | SUB ASSEMBLY   |                 |                 |          |
|           | #        | C.D.D. 9-16-51                                       |                 | DRAWN           | A. J. J. |
|           | #        |  |                 | ELEC. DES. APP. |          |
|           | #        |  |                 | CHECKED         |          |
|           | #        |  |                 | MECH. DES. APP. |          |
|           | #        |  |                 | FINAL APPROVAL  |          |
|           | #        |  |                 | A-144 A         |          |

| A   | LD132 REF ADDED | 10.18.66 | 17064   | WU             |           |
|---|-----------------|----------|---------|----------------|-----------|
| ISSUE ITEM  | CHANGED FROM    | DATE     | CN. NO. | DRAFTS CHECKER | ENG. APP. |
| TOLERANCES  |                 |          |         |                |           |
| SCALE   |                 |          |         |                |           |
| DEC. DIM. $\pm$   |                 |          |         |                |           |
| ALL FRAC. DIM. $\pm$  |                 |          |         |                |           |
| OTHERS ANGULAR DIM. $\pm$   |                 |          |         |                |           |
| DRILL, PUNCH, COMMERCIAL STOCK SIZES AND MANUFACTURERS TOLERANCES ARE NOT INCLUDED. |                 |          |         |                |           |