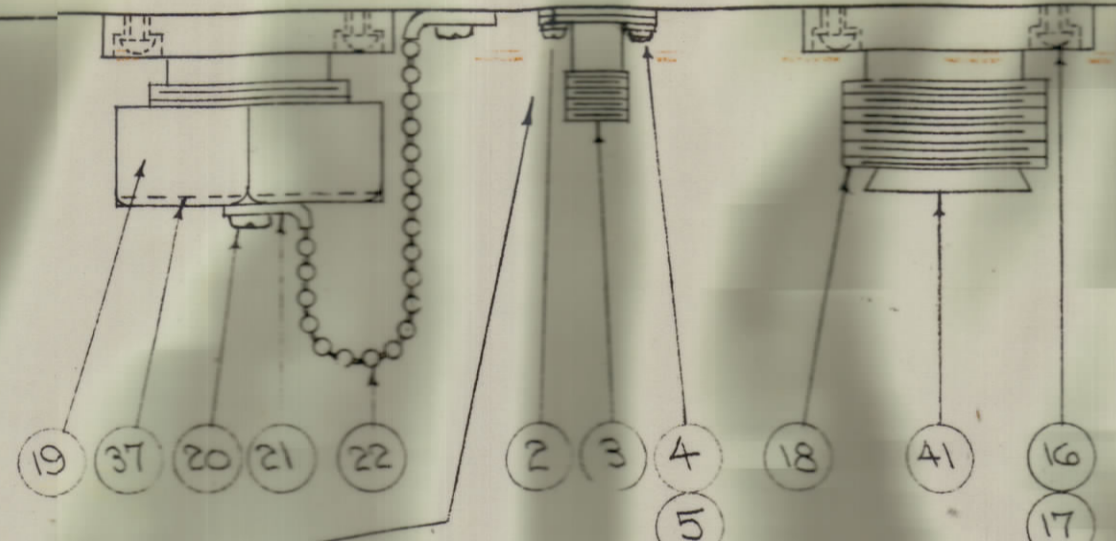
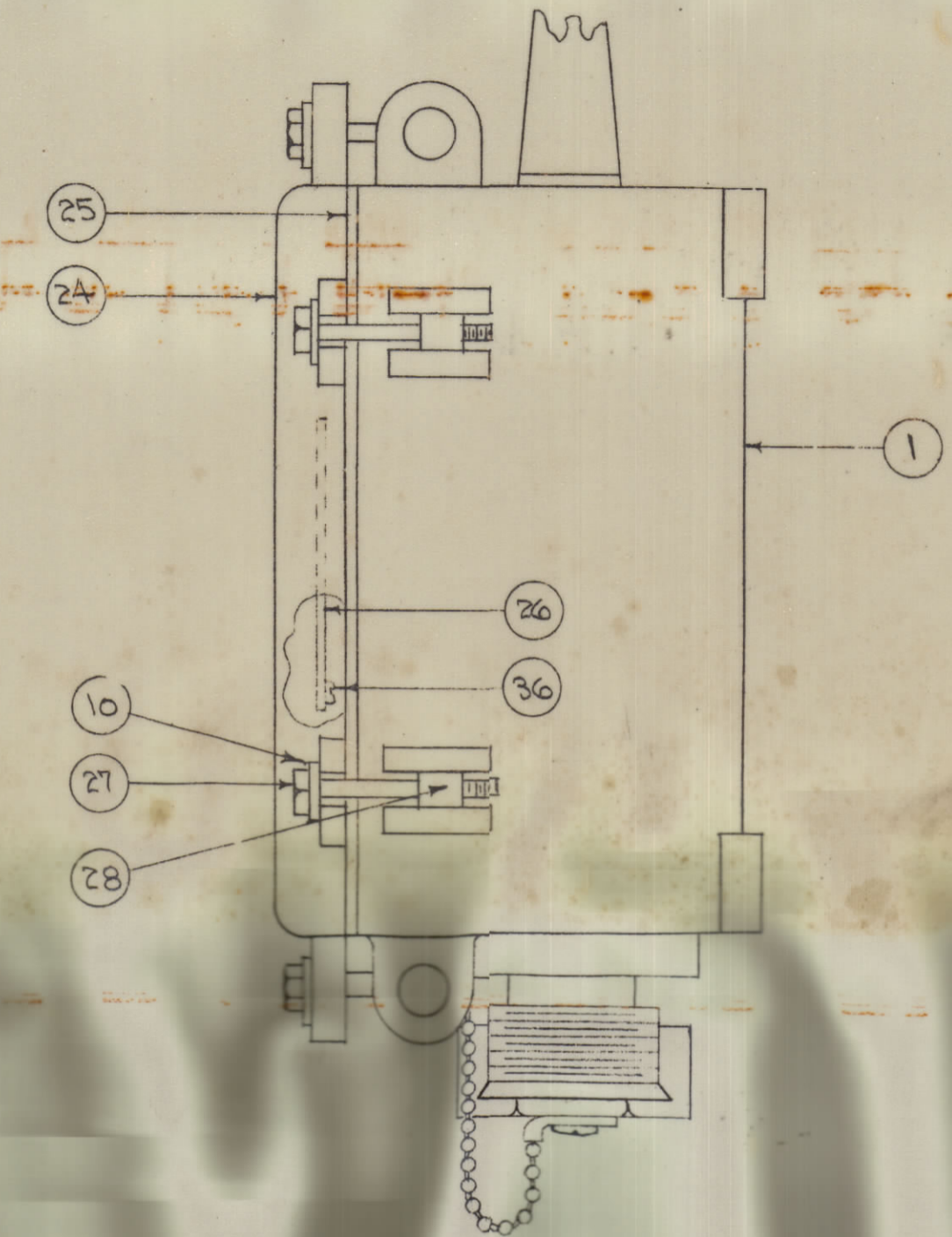
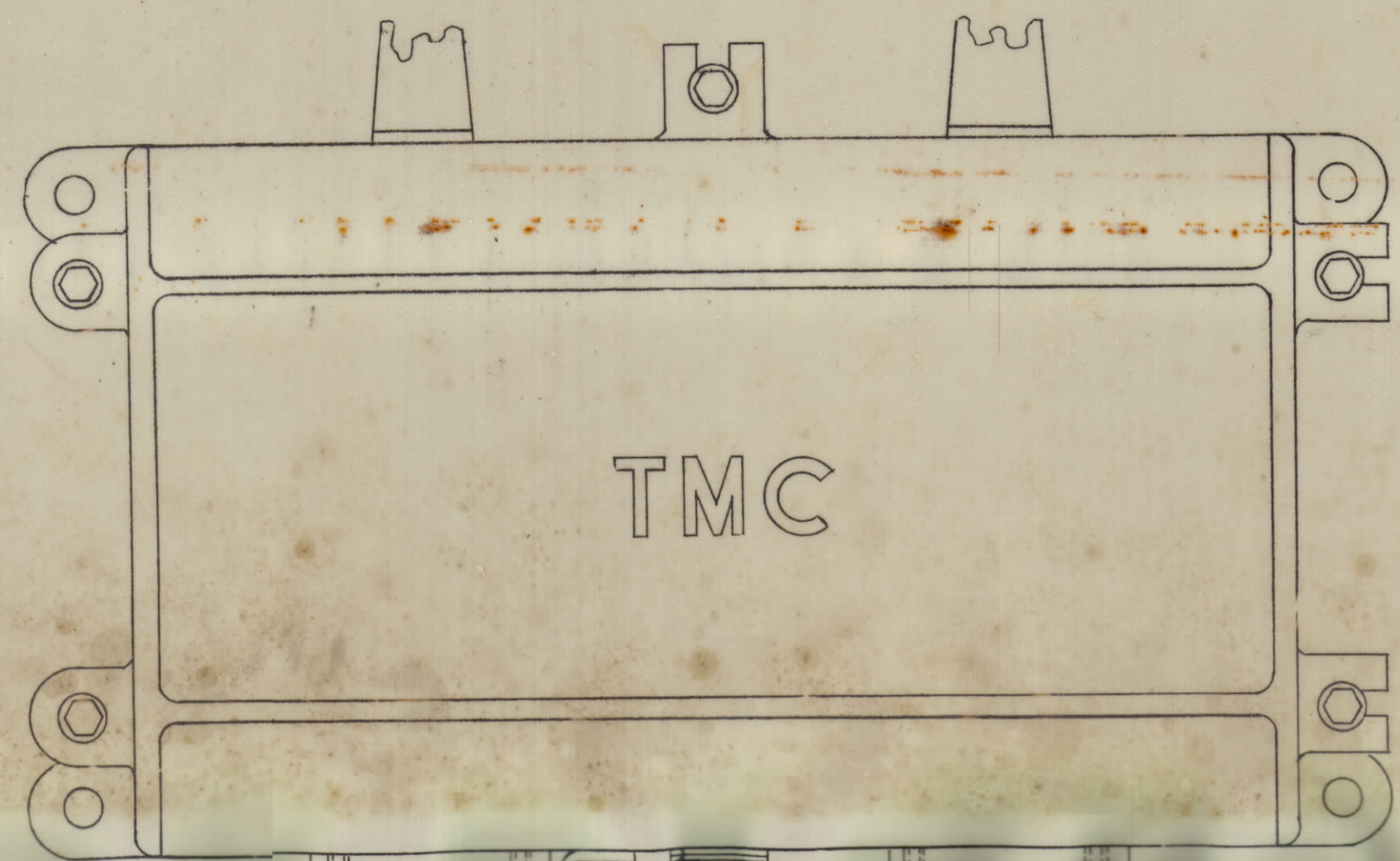


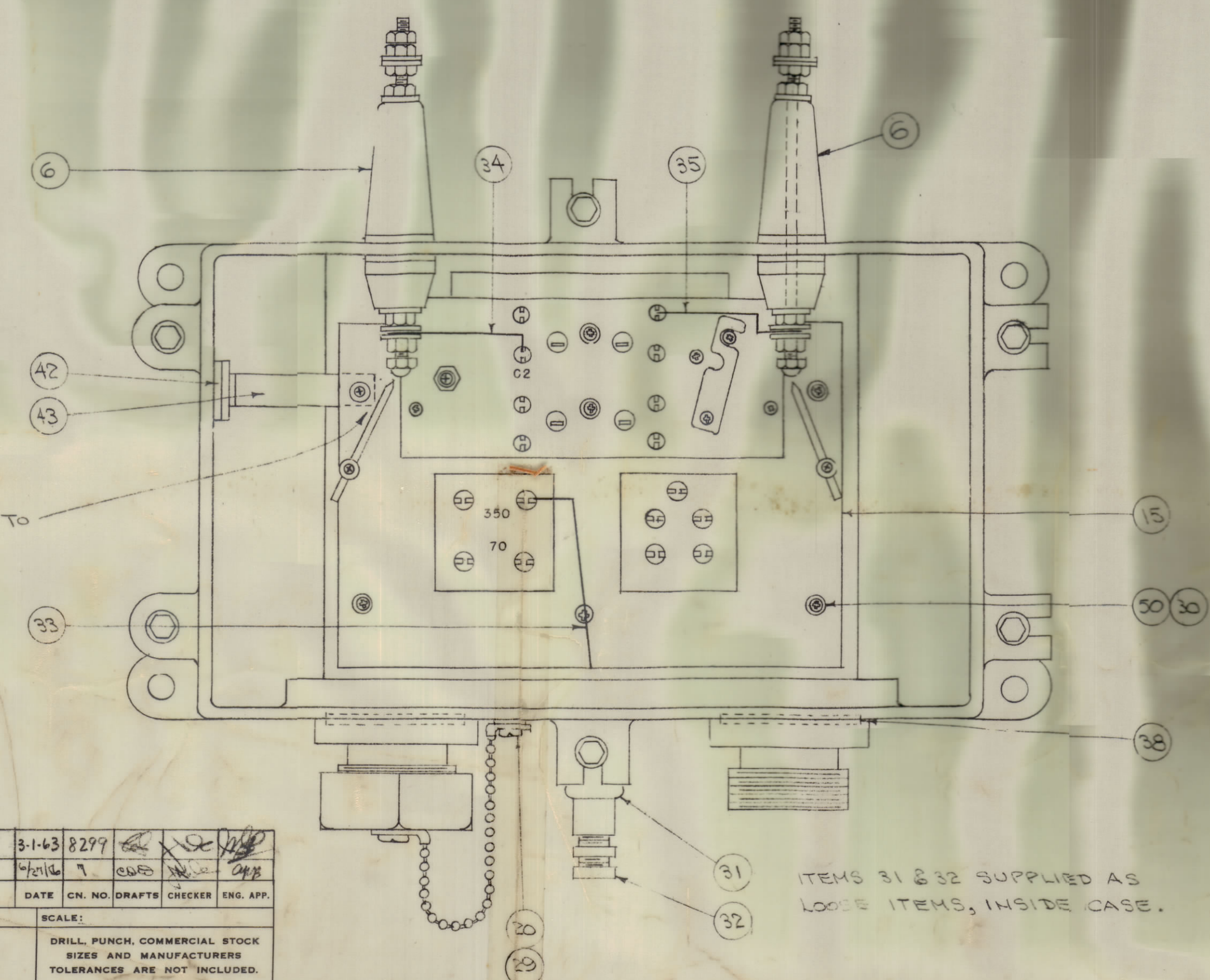
IF IT IS FOUND DESIRABLE TO CHANGE ANY TOLERANCE OR OTHER DETAIL SPECIFIED ON THIS DRAWING NOTIFY THE PURCHASER PROMPTLY.
 MAXIMUM ALLOWABLE TOLERANCES HAVE BEEN DETERMINED AND DEVIATIONS WILL BE CAUSE FOR REJECTION. REMOVE ALL BURRS AND SHARP EDGES

NOTICE TO PERSONS RECEIVING THIS DRAWING
 THE TECHNICAL MATERIEL CORPORATION claims proprietary right in the use of all disclosed herein. This drawing is issued in confidence for engineering information only and may not be reproduced or used to manufacture anything shown hereon without permission from THE TECHNICAL MATERIEL CORPORATION to the user. This drawing is loaned for mutual assistance and is subject to recall at any time.
 Property of:
 THE TECHNICAL MATERIEL CORPORATION
 MAMARONECK, NEW YORK

CEMENT ITEM 25 TO ITEM 24 WITH ITEM 30

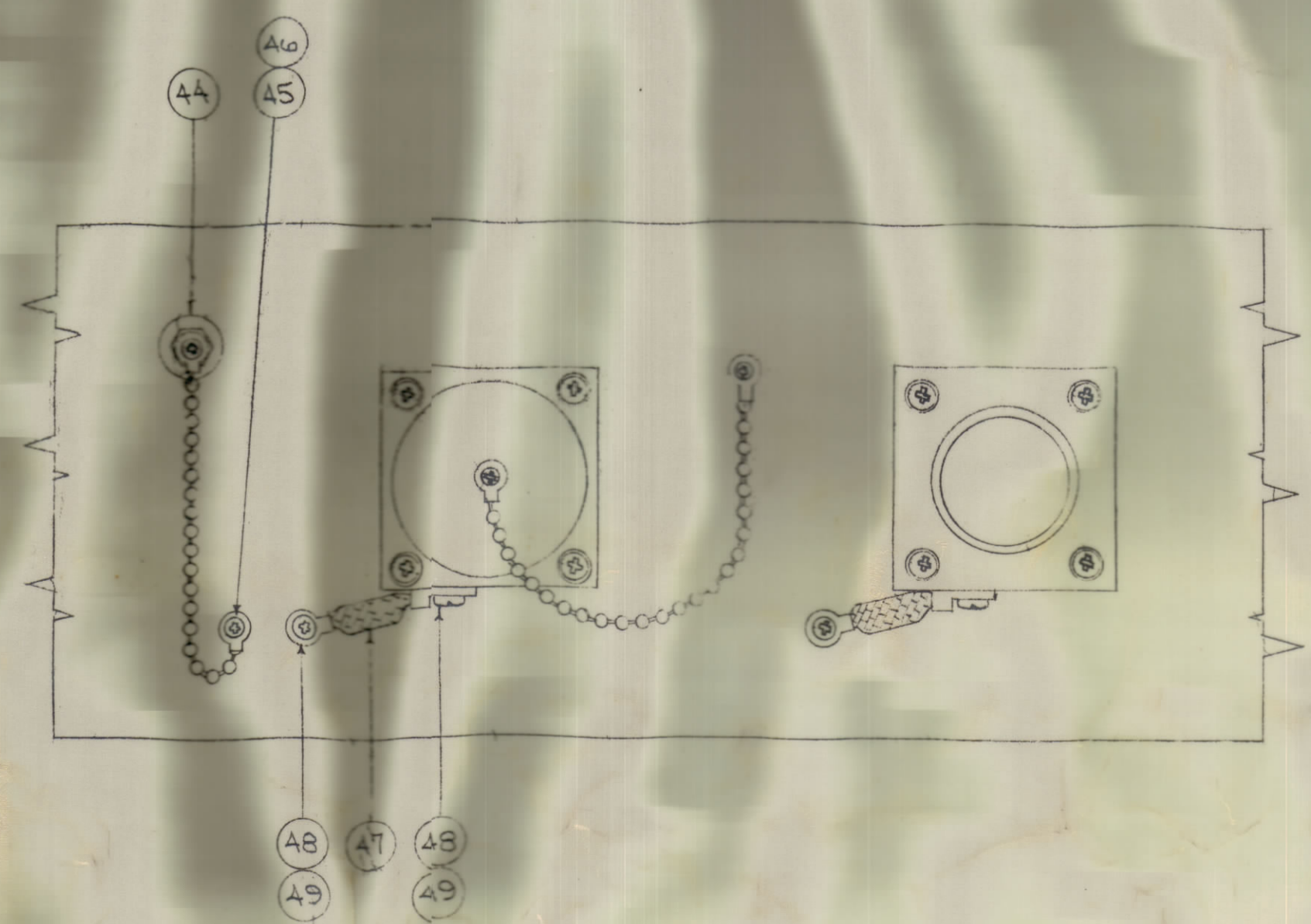


BOTTOM CATCH REMOVED TO SHOW RECEPTACLE DETAIL.



ADJUST SPARK GAPS TO 1/32" SPACING

ITEMS 31 & 32 SUPPLIED AS LOOSE ITEMS, INSIDE CASE.



DETAIL - GROUND STRAPS AND DRAIN PLUG

4	55	SCH3716 S116	BOLT, HEX HEAD (LOOSE ITEM)	
8	54	SC-111-2	BOLT, LAG (LOOSE ITEM)	
4	53	NTH 3716 S120	NUT, HEX. (LOOSE ITEM)	
4	52	MS-G19	BRACKET, MTG. (LOOSE ITEM)	
4	51	LWS 37MSN	LOCKWASHER SPLIT (LOOSE ITEM)	
5	50	LWE 08MRN	LOCKWASHER, EXTERNAL (LOOSE ITEM)	
4	49	SCBP1032SS6	SCREW, MACHINE	
4	48	LWE10MSS	WASHER, LOCK	
2	47	CA-409-69-200	GROUND STRAP ASSY	
1	46	LWE06MSS	WASHER, LOCK	
1	45	SCBP0632SS3	SCREW, MACHINE	
1	44	A2-1291	DRAIN PLUG ASSY.	
1	43	M;-933	HOLDER, DESSICANT	
2	42	AD-101-1/3	DESSICANT	
1	41	RY-114-17116	STOPPER	
-	40	-	DELETED	
X	39	GL-101-2	CEMENT, PLOBOND	
2	38	GA-102	GASKET	
1	37	GA-105	GASKET, CAP	
4	36	SC-102-1	SCREWS, THD. CUTTING	
8	35	MWC20(7)U4	WIRE, INSULATED	YEL.
8	34	MWC20(7)U6	WIRE, INSULATED	BLUE
8	33	MWC20(7)U5	WIRE, INSULATED	GEN.

SHIP LOOSE

1	32	MX-36A/U	CLAMP, ARMOR	
1	31	UG-21B/U	PLUG	
5	30	SCBP0832SS6	SCREW, MACHINE	
1	29	LWE08MSS	WASHER, LOCK	
6	28	PM-100	PIN, COVER BOLT	
6	27	SCH2520SS28	BOLT, HEX HEAD	
1	26	LD-102	SCHEMATIC DIAGRAM	
1	25	GA-107	GASKET, COVER	
1	24	PM-114	COVER	
X	23	BS-100	SOLDER, SOFT	
8	22	CI-100-2	BEAD CHAIN	
2	21	MS-105-1-S	COUPLING, CHAIN	
2	20	SCBP0832SS4	SCREW, MACHINE	
1	19	PM-108	CAP, FLANGE	
2	18	PM-107	COUPLING, FLANGE	
8	17	SCR2520SS10	SCREW, MACHINE	
8	16	LWS25MSS	WASHER, LOCK	
1	15	A-114	TRANS. & T.B. SUB ASSY	
-	14	DELETED	DELETED	
-	13	DELETED	DELETED	
-	12	DELETED	DELETED	
-	11	DELETED	DELETED	
6	10	FW25HSS	WASHER, FLAT	
-	9	DELETED	DELETED	
-	8	DELETED	DELETED	
-	7	DELETED	DELETED	
2	6	A-102	INSULATOR, ASSY.	
4	5	LWE04MSS	WASHER, LOCK	
4	4	SCBP0408SS6	SCREW, MACHINE	
1	3	UG-58A/U	RECEPTACLE	
1	2	GA-149-5	GASKET, CONNECTOR	
1	1	PM-110	CASE	

HI	PICTORIAL # BUILD-UP COMPLETELY UP DATED	3-1-63	8297				
Q	ISSUE ITEM	CHANGED FROM	DATE	CN. NO.	DRAFTS	CHECKER	ENG. APP.
TOLERANCES		SCALE:					
ALL	DEC. DIM. ±	DRILL, PUNCH, COMMERCIAL STOCK					
OTHERS	FRAC. DIM. ±	SIZES AND MANUFACTURERS					
	ANGULAR DIM. ±	TOLERANCES ARE NOT INCLUDED.					

1	BAC-2-S-20	108		8-1-52	
REQ PER UNIT	MODEL	PROJECT NO.	ASSY. NO.	DATE	
USED ON					

THE TECHNICAL MATERIEL CORP. MAMARONECK, NEW YORK			
CASE & COVER ASSEMBLY			
MATERIAL WEIGHT PER PC. BAC-2-S-20			
TYPE & TEMPER. CVD 6-21-56		DRAWN: <i>ARB</i>	
HEAT TREAT. SPEC. <i>HR2</i>		ELEC. DES. APP. <i>ARB</i>	
FINISH & SPEC. NO.		MECH. DES. APP. <i>ARB</i>	
		FINAL APPROVAL <i>ARB</i>	
		A-107 H	