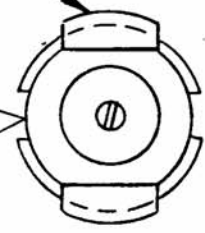


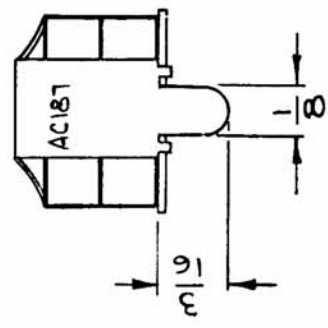
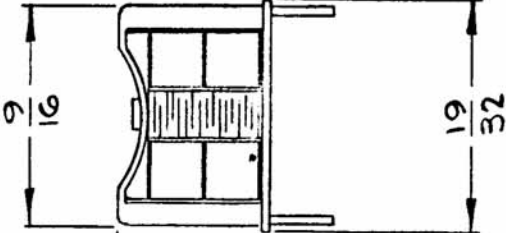
REQ. PER UNIT	MODEL	USED ON ASSY. NO.	DATE
1	VLRB-1	A3681	3-26-65

AC 187 A

START BLUE
END RED



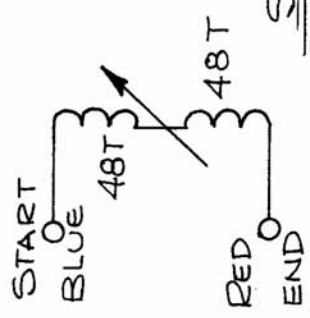
STAMP TMC PART NO.
3/32 HIGH GOTHIC
W/LATEST REV. LETTER



ELECTRICAL SPECS.
(WITH SLUG INSERTED)
OPERATING FREQUENCY:
INDUCTANCE @ 250 KCS
PRIMARY: 1.5 mh \pm .015 mh
SECONDARY: \curvearrowright
"Q" (PRIMARY) @ 150 KCS: $>$ 300
MECHANICAL SPEC.

TURNS
PRIMARY: 9C
SECONDARY: \curvearrowright
RETAINER, BOTTOM: BRASS CAD PLATED
RETAINER, TOP: NICKEL SILVER H/H

MATERIAL:
CORE & SLUG: POWDERED IRON



SCHEMATIC DIAGRAM

REQ. ITEM	PART NO.	DESCRIPTION	SYMBOL
		THE TECHNICAL MATERIEL CORP. MAMARONECK. NEW YORK	
		COIL, RF, ADJUSTABLE	
			H. AUSTIN
			DRAWN
			CHECKED
			FINAL APPROVAL
			AC 187
			A

SYMBOL	DESCRIPTION	DATE	CH. NO.	DRAFTS	CHECKER	ENG. APP.
A	ELEC. SPEC. PRIM. WAS 1.523 MH	5-21-65	14120	CJT	JB	
	ORIGINAL RELEASE FOR PRODUCTION	4.7.65				
	UNLESS OTHERWISE SPECIFIED DIMENSIONS ARE IN INCHES AND INCLUDE CHEMICALLY APPLIED OR PLATED FINISHES					
	FRACTIONS	SCALE				
	DECIMALS	TOLERANCES				
	.X \pm .05	A				
	.XX \pm .01	2-A3915				
	.XXX \pm .005	CODE				
		A				