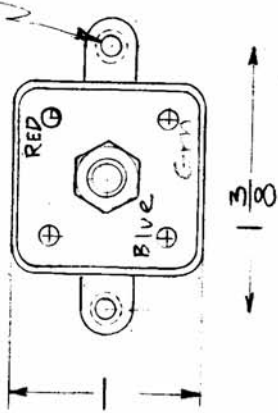
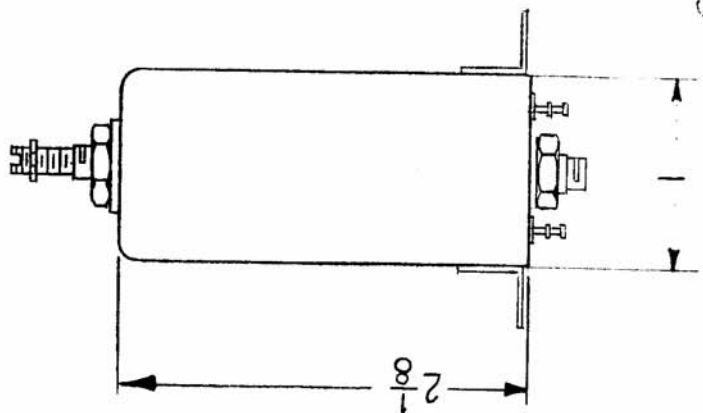


REQ. PER UNIT	MODEL	USED ON
1	CHG-1	ABBY. NO.
1	CHG-2	DATE
1	HFS-1	AX-389

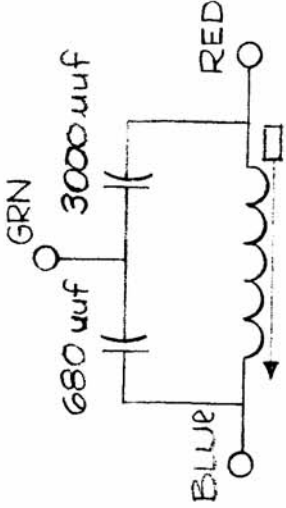
AC-126

9-23-1960
11-5-63
11-5-63



MODEL	REQ	FUNCTION	OPER. FREQ.	SYM
CHG-1	1	250Kc OUTPUT	250 Kc	L1603
CHG-2	1	250 Kc OUTPUT	250 Kc	L2603
HFS-1	1	250Kc OUTPUT	250 Kc	L3704

TEST DATA (W/OUT CORE)
L=540uh ± 10%
Q=50 or Greater
FREQ=790 KC



ISSUE ITEM	CHANGED FROM	DATE	CH. NO.	DRAFTS	CHECKER	ENG. APP.	REQ. ITEM	PART NO.	DESCRIPTION	SYMBOL	
D 1	DWG UPDATED	12/18/63	10473	RD	RD	RD			THE TECHNICAL MATERIEL CORP. MAMARONECK, NEW YORK		
C 1	ON TEST DATA L WAS 540UH (±15)	5-3-61	4806	WLF	WLF	WLF			COIL, RF, TUNED		
B 1	2-1/8 DIM WAS 1-3/16	3-11-61	4395	WLF	WLF	WLF					
A 3	RED WAS BLACK	11-15-60	3479	RU	RU	RU					
	3000uF WAS 1600uF										
	680uF WAS 820uF										
TOLERANCES		SCALE: 2A-1955		MAXIMUM ALLOWABLE TOLERANCES HAVE BEEN DETERMINED AND ANY DEVIATIONS WILL BE CAUSE FOR REJECTION. REMOVE ALL BURRS AND SHARP EDGES		TYPE & TEMPER		HEAT TREAT. SPEC.		DRAWN	
DEC. DIM. ±										CHECKED	
FRAC. DIM. ±										ELEC. DES. APP. MECH. DES. APP.	
ANGULAR DIM. ±										FINISH & SPEC. NO.	
										ELEC. DES. APP. MECH. DES. APP.	
										FINAL APPROVAL	
										AC-126	
										D	